



For more information on the connection of your appliance to the App, please visit our Wizard Website where you can watch our connection video before you start or find our F.A.Q. and download section, please go to: <http://wizardservice.candy-hoover.com/GB/en/>

Wizard – Quick Start Guide (Hood)

Installing The Appliance

Install the appliance in accordance with the installation guide within the instruction book supplied.

Once this step has been completed, ensure the appliance is working by controlling the appliance directly using the control panel.

Please take the time to read the program guides and functions and features as this will help you take full advantage of the features of your new appliance.

Locating Your Wi-Fi WPA/WEP Key

Locate the WPA/WEP key which is normally found on the back of your Wi-Fi router.



*Example of BT router

If you are having trouble locating the WPA/WEP key, please contact your Internet Provider.

Making a Note For Later

Once you have your Wi-Fi WPA/WEP key, please make a note of it below as you will need this later on whilst connecting the appliance to the App

Router Name _____

WPA/WEP Key _____

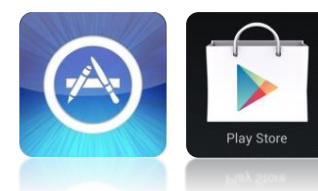
Connect your device to your Wi-Fi router ready to install the App

Downloading The App

Download the **Hoover Wizard** App from the App store relevant to your device.

Note – The App is suitable for iOS (version 7 and greater) and Android (version 4 and greater)

App Name - Hoover Wizard



Locating Your Product Code

Locate the product code of your appliance and write down the 8 and two 4 digit codes. Grease filter needs to be removed.



Making a note for Later

The illustration shows the format of the appliance information



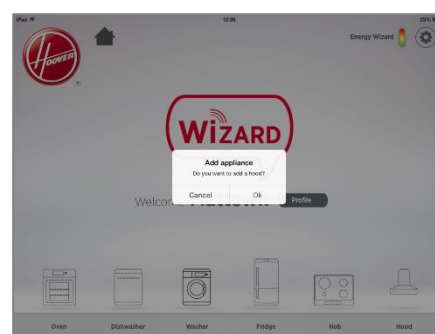
Write your product numbers here:

Step 1



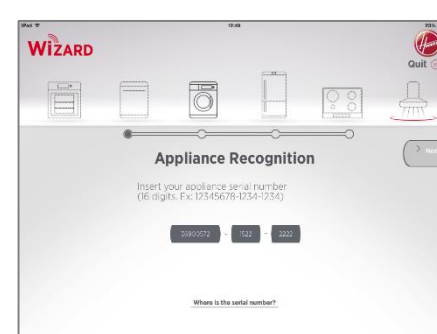
Click on the appliance that you want to connect.

Step 2



Click on OK.

Step 3



Insert the 16 digit serial number which you wrote down above.

Step 4



Check that the product details are correct and then press the confirm button.

Step 5



Once your appliance has been recognised, press the next button.

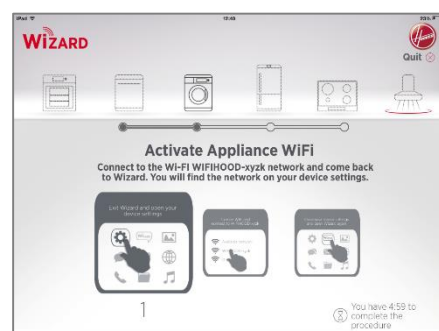
Once you press the next button you have 5 minutes to complete the process

Step 6



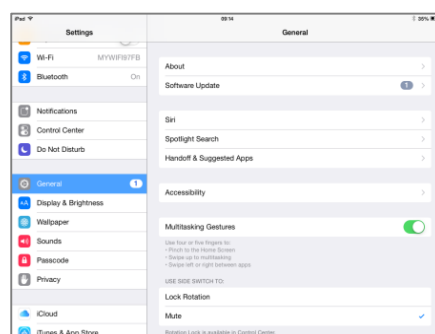
Ensure the hood is switched off. Press and hold the “+” and the “clock” buttons until “r” appears in the display. “0” and “1” will appear prior to “r” keep buttons depressed until “r” appears. Press “Next” on APP.

Step 7



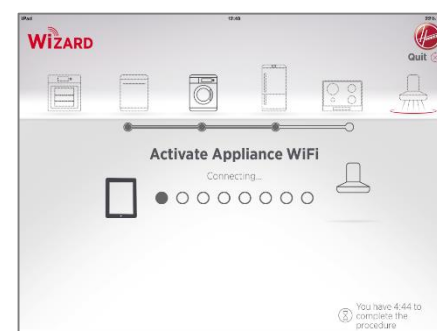
Exit the Wizard App and go to your device Wi-Fi settings

Step 8



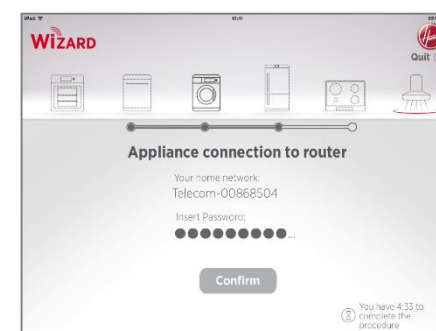
Click on Wi-Fi settings and select “WIFIHOOD-xyzk”.

Step 9



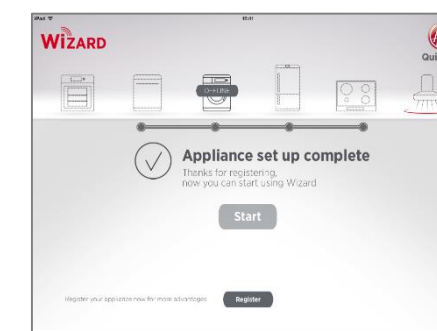
Close the setting and return to the Wizard App, wait for the App to detect the appliance. Once the “Wi-Fi Network is active” screen appears press “Next” on App.

Step 10



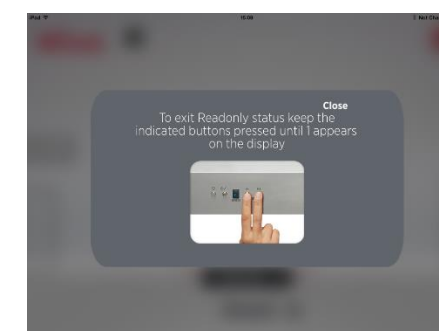
Now select your home router name and enter the router password and press the confirm button.

Step 11



For more advantages, you can register your appliance by pressing the dedicated button. By pressing the start button it will take you to the home screen.

Step 12



On completion the product will default to read only status. To exit read only status press and hold the “+” and the “clock” buttons until “1” appears in the display.

If the set up does not complete - It is important that there is a good Wi-Fi signal strength from the home router to the appliance; low Wi-Fi signal strength would cause the final stage of the set up to fail. To establish if this is the case, start the connection process again from step 1, at step 8 stand by your home router and search for the Wi-Fi hood. If this does not come up as an option, this means the router cannot see the appliance. We recommend that you contact your Internet provider for them to advise you of a compatible Wi-Fi extender to purchase, once installed, follow the set up process again to complete the connection.